

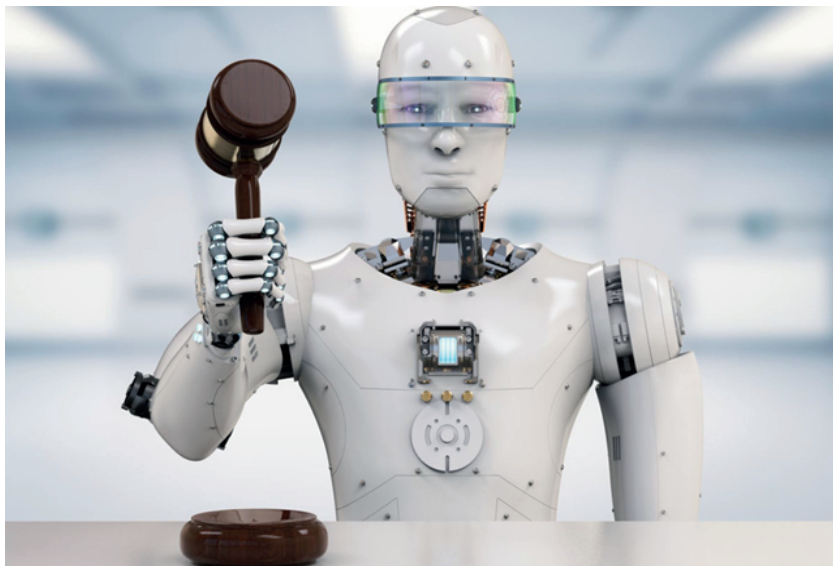


In collaboration with

MILAN
CHAMBER OF
ARBITRATION
Resolution of commercial
disputes

ARBITRAL
WOMEN

NEW FRONTIERS AND CHALLENGES IN INTERNATIONAL ARBITRATION: FROM STONE AGE TO ARTIFICIAL INTELLIGENCE



November 23, 2017
14.00 - 18.30

Milan Chamber of Arbitration
Sala Consiglio, 1st Floor
Via Meravigli, 9/b
Milan

14.00 - 14.30 Welcome Address

Stefano AZZALI
Secretary General, Milan Chamber of Arbitration

Maria Beatrice DELI
Secretary General, Italian Association for Arbitration (AIA)
Secretary General, ICC Italy

Mirèze PHILIPPE
Special Counsel, ICC, International Court of Arbitration, Paris
Board Member, ArbitralWomen

Giacomo ROJAS ELGUETA
Associate Professor of Private Law, Roma Tre University
Co-chair ArbIt

14.30 - 14.45 Introductory Remarks

Angelo ANGLANI
Partner, NCTM Studio Legale, Rome

14.45 - 15.30 Panel 1 DIGITALISATION IN ARBITRATION PROCEEDINGS

Moderator
Niccolò LANDI
Founder, Studio Legale Landi in association with BeecheyArbitration, Milan
Co-chair ArbIt

Panelists
Mirèze PHILIPPE
Special Counsel, ICC, International Court of Arbitration, Paris
Board Member, ArbitralWomen

Eva STORSKRUBB
Associate Professor of Procedural Law, Uppsala University
Dispute Resolution Counsel, Roschier, Stockholm

15.30 - 15.45 Q&A Session

15.45 - 16.30 Panel 2 ARTIFICIALLY INTELLIGENT ARBITRATOR?

Moderator
Cristina MARTINETTI
Partner, Elexi Studio Legale, Turin
Co-chair ArbIt

Panelists
Corrado DRUETTA
Legal Counsel, COMAU S.p.A.
Sophie NAPPERT
Independent Arbitrator, 3 Verulam Buildings Barristers, London

16.30 - 16.45 Q&A Session

16.45 - 17.15 Coffee Break

17.15 - 18.00 Panel 3 PRIVACY AND DATA PROTECTION IN ARBITRATION PROCEEDINGS

Moderator
Valentine CHESSA
Partner, CastaldiPartners, Paris
Co-chair ArbIt
Board Member, ArbitralWomen

Panelists
Rick BARKER
Partner, Accuracy, Milan

Alberto ODDENINO
*Associate Professor of International Law and of International Arbitration,
University of Turin*

18.00 - 18.15 Q&A Session

18.15 - 18.30 Closing Remarks

Andrea CARLEVARIS
Partner, BonelliErede, Paris-Milan

Please register by using the following email address: nl@landilegal.com