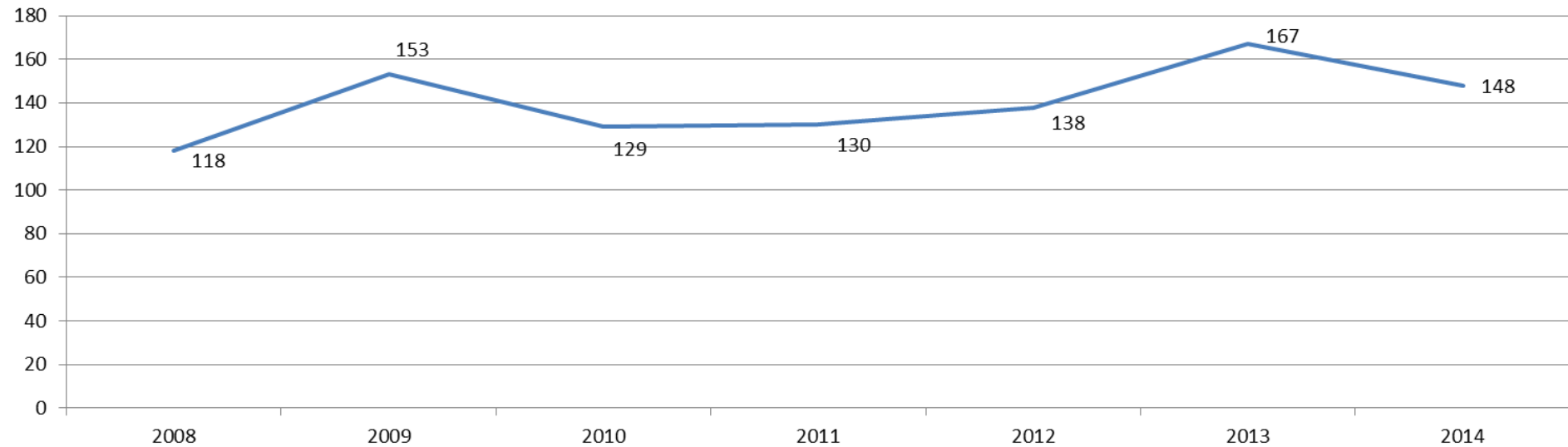


## CAM 2014 – FACTS AND FIGURES

In 2014 there was a normalization after the strong increase in the number of cases administered by the Milan Chamber of Arbitration. With 148 new cases, CAM comes back to the normal growing line.

### NUMBER OF NEW CASES: 148.

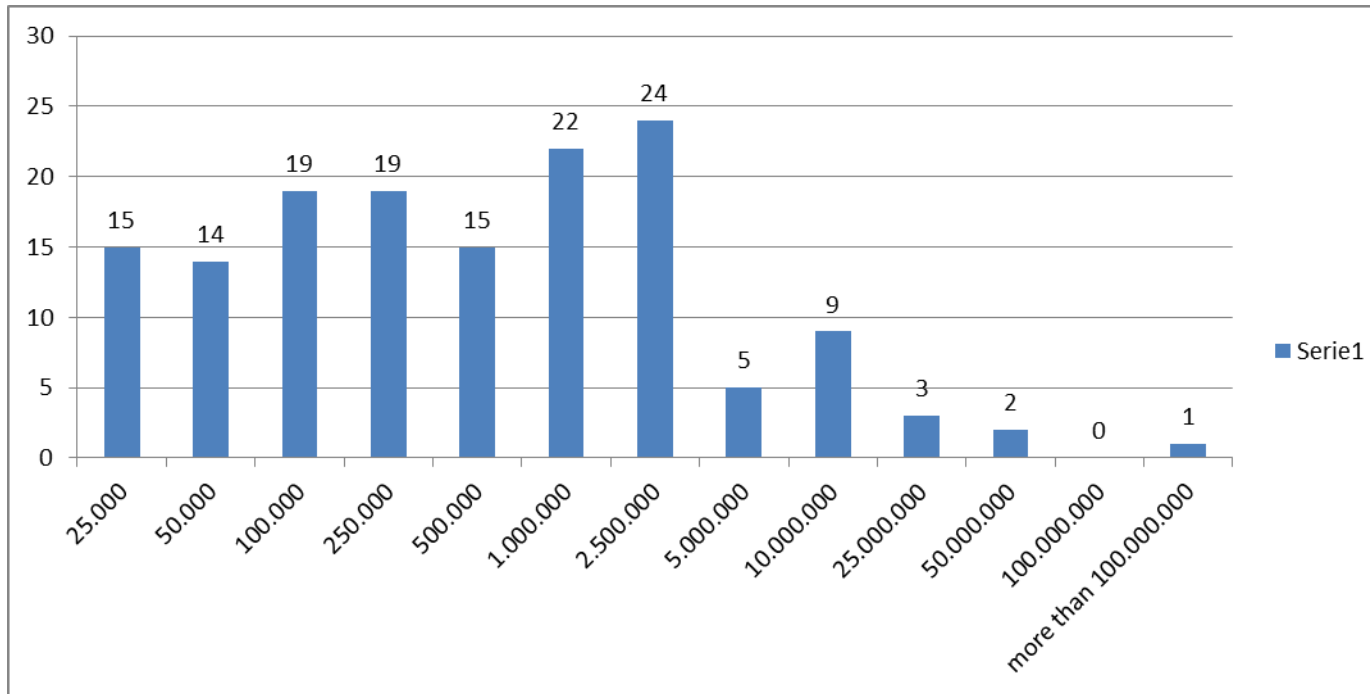


**AVERAGE DURATION OF THE PROCEEDING:** 14 months (since the request for arbitration)

**AVERAGE VALUE OF THE DISPUTE: € 2.377.089**

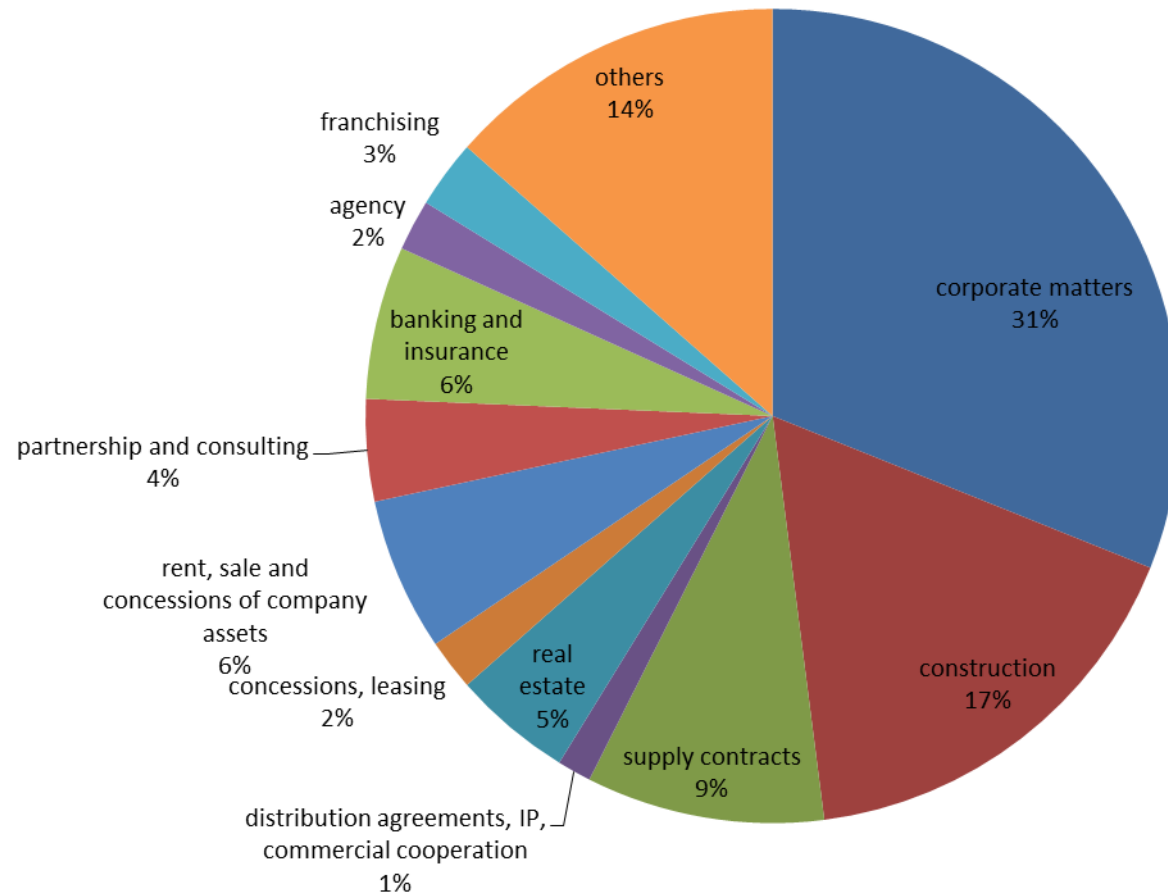
**28%** of the cases had a high value of the dispute (more than € 1.000.000)

### Cases and value of the dispute in accordance with the fee brackets



**MATTER IN DISPUTE:** **31%** corporate; **17%** construction; **9%** supply contracts; **6%** respectively rent/sale/concession of company assets, banking and insurance. **5%** real estate

## Subjects of the disputes



**COMPOSITION OF THE ARBITRAL TRIBUNAL: 53% Panel 47% Sole Arbitrator**

In 2013 62% Panel 38% Sole Arbitrator, in 2012, 67% Panel and 33% Sole Arbitrator

**AWARDS RENDERED IN 2014: 61 Final Awards.**